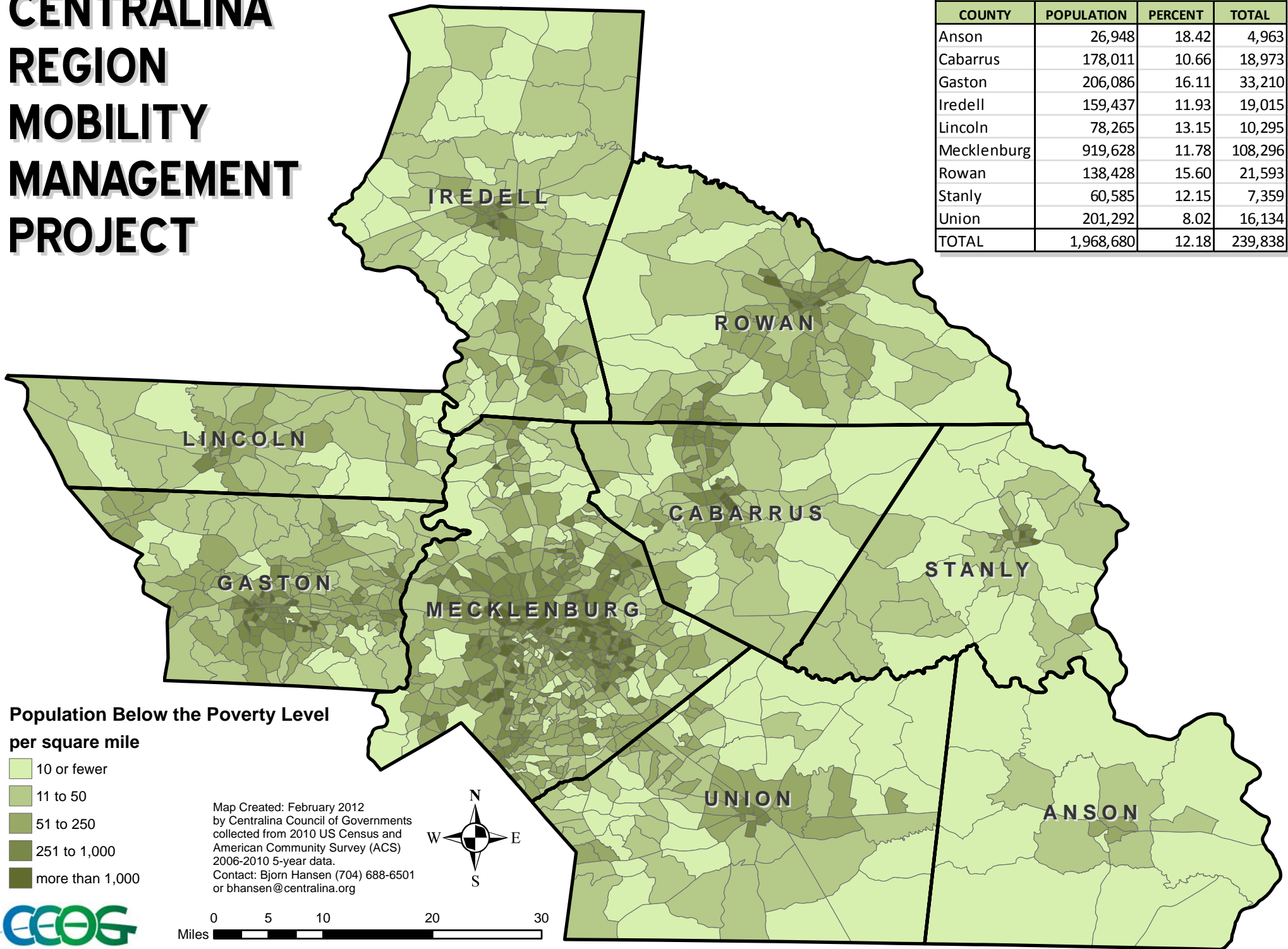


CENTRALINA REGION MOBILITY MANAGEMENT PROJECT

Population Below the Poverty Level			
COUNTY	POPULATION	PERCENT	TOTAL
Anson	26,948	18.42	4,963
Cabarrus	178,011	10.66	18,973
Gaston	206,086	16.11	33,210
Iredell	159,437	11.93	19,015
Lincoln	78,265	13.15	10,295
Mecklenburg	919,628	11.78	108,296
Rowan	138,428	15.60	21,593
Stanly	60,585	12.15	7,359
Union	201,292	8.02	16,134
TOTAL	1,968,680	12.18	239,838



**Population Below the Poverty Level
per square mile**

- 10 or fewer
- 11 to 50
- 51 to 250
- 251 to 1,000
- more than 1,000

Map Created: February 2012
by Centralina Council of Governments
collected from 2010 US Census and
American Community Survey (ACS)
2006-2010 5-year data.
Contact: Bjorn Hansen (704) 688-6501
or bhansen@centralina.org

